

DEFINITIONS.

ANSUL SYSTEMS. Automatic fire suppression system in exhaust hood over most cooking areas.



AUTOMATIC TRANSFER SWITCH. A panel that switches power during an outage to a back-up source. (Usually a generator)



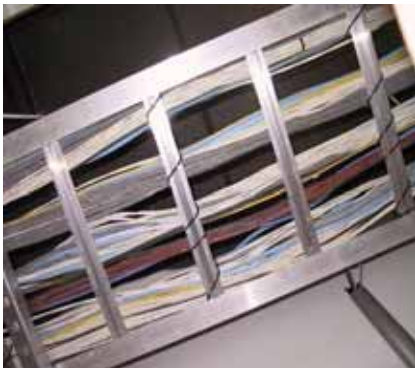
**BALLARD LIGHTS.** A rounded concrete pole with lighting near the top



**BUCKET.** Part of the switch gear that contains fuses.



**CABLE TRAY.** A ladder type tray that is in ceiling supported by rods that is open and cable lay inside.



**CASSON.** Concrete foundation where poles and other fixtures are mounted.



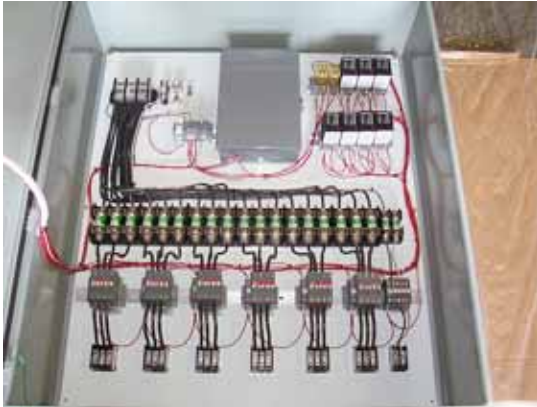
**CONDUIT.** A race way to hold and protect wiring



**CONDUIT SUPPORTS.** Means of anchoring conduit to ceilings, walls and floors.



**CONTACTOR.** Used for controlling primary lighting by way of timer for different zones and areas.



**E.M.T. Electrical metal tubing.** Bendable thin wall metal conduit.



**EQUIPMENT OUTLET.** Usually round with a twist-lock round plug connected to it.



**EXPLOSION PROOF.** Conduit and boxes that are sealed for areas with flammable fumes, gases or vapors.



**FLEX.** Flexible metal conduit.



**FROG-EYE.** Exit sign with 2 directional lights on top.



**GUTTER.** A metal box that contains wires and may have multiple entry and exit points for conduit.



**HORN/STROBE.** A fire alarm device that flashes light and sound an alarm.



**JELLY-JAR.** A lighting fixture with a thick glass (jar) that screws to the housing. Sometimes has a cage around to protect from damage. lighting



**K.O. CLOSURE.** A metal plug used to fill a hole that is no longer in use.



**KNOCK-OUT.** Pre-punched hole for conduit entry or exit.

**M.C.** Metal clad raceway usually not larger than  $\frac{3}{4}$  " in diameter



**M.C.C.** Motor control center. This cabinet is used to control motors and remote starters.



**METER HOUSING.** Contains meter. Properties may contain multiple meters.



**PULL STATION.** A fire alarm device with handle that is pulled to activate fire alarm.



**RIGID CONDUIT.** A thick walled metal pipe that is non bendable.





Commercial Inspection Training  
Electrical System  
Part One  
Definitions

RTU. Roof top unit. Used to provide heating or cooling to property.



SPRINKLER SYSTEM. Rows of piping with heads that are activated under heat. This will be part of the fire alarm system.



SWITCH GEAR. Usually connected to a transformer and used to switch power to different parts of the system.



Commercial Inspection Training  
Electrical System  
Part One  
Definitions

TRANSFORMER. Not a movie. Changes incoming voltages usually from higher to lower.

